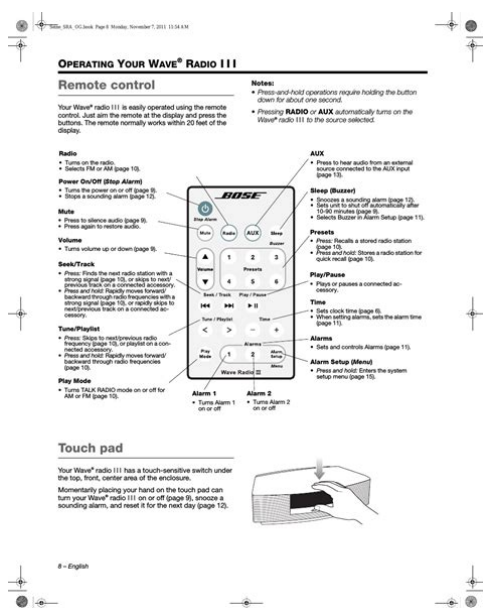


bose radio remote control manual



File Name: bose radio remote control manual.pdf

Size: 4472 KB

Type: PDF, ePub, eBook

Category: Book

Uploaded: 23 May 2019, 17:31 PM

Rating: 4.6/5 from 686 votes.

Status: AVAILABLE

Last checked: 17 Minutes ago!

In order to read or download bose radio remote control manual ebook, you need to create a FREE account.

[**Download Now!**](#)

eBook includes PDF, ePub and Kindle version

[Register a free 1 month Trial Account.](#)

[Download as many books as you like \(Personal use\)](#)

[Cancel the membership at any time if not satisfied.](#)

[Join Over 80000 Happy Readers](#)

Book Descriptions:

We have made it easy for you to find a PDF Ebooks without any digging. And by having access to our ebooks online or by storing it on your computer, you have convenient answers with bose radio remote control manual . To get started finding bose radio remote control manual , you are right to find our website which has a comprehensive collection of manuals listed.

Our library is the biggest of these that have literally hundreds of thousands of different products represented.



Book Descriptions:

bose radio remote control manual

Page 4 Before you begin Setting Up. Before you begin Unpacking the carton Save all packing materials for possible future use. The original. Page 6 Installing the battery Setting Up. Installing the battery Connecting the power cord Setting up the remote control It may cause. Page 9 Setting Up Page 10 Connecting other components as an option Setting Up. Connecting other components as an option. Page 11 Setting Up Portable tape player One mini plug to Headphone jack. Using the remote control Figure 9 Lights when Alarm 1 is Flashes when Shows. Setting the time Controlling the system Using the radio. Using the CD player Place the CD, label side up. Setting the alarms Alarm 1 Using the alarms Alarm 1 Troubleshooting. Problem What to do. Page 24 Index Index Page 25 Index. P stereo tuner 4 Page 26 Notes. Push to the right and Insert the battery into the battery carrier, matching the It will automatically lock in place. Use the remote keys in the same way you use the radio Dispose of. AM324446 Rev.00 Please save this guide Unauthorized alterations may compromise safety, It is best to avoid extreme volume when using headphones, Notes. The lightning flash with arrowhead symbol within an exclamation point within an equilateral triangle alerts Liquids can cause a Do not recharge, disassemble, heat above 100C 212F, or incinerate. Dispose of used batteries promptly. Replace only with batteries Not suitable for children under age 3. It is neither designed nor Additional safety information. See the additional instructions on the Important Safety Information sheet enclosed in the shipping carton. Batteries. Please dispose of used batteries properly, following any Class B emissions. This device complies with FCC and Industry Canada RF radiation It must not be This product conforms to all EU Directive requirements as English This equipment has been tested and found to comply with the Changes or modifications not expressly approved by Bose. <http://nedirajtebosnu.net/userfiles/composizione-manuale-suonerie.xml>

- **bose radio remote control manual, bose radio remote control manual, bose radio remote control manual 2016, bose radio remote control manual download, bose radio remote control manual pdf, bose radio remote control manual free.**

Corporation could void the user's authority to operate this Operation is subject to the following two conditions 1 This Bose recommends that you record your system model Serial numbers are located on the bottom of the console, and. System model name and number on the carton. Serial numbers. Retailer information. Please keep your sales receipt and a copy of your Product. Registration card together with this guide. No part of this work may be reproduced, Laboratories. All rights reserved. This product contains one or more programs protected under They are confidential and proprietary to Dolby Laboratories. Their Laboratories, Inc. All rights reserved. HDMI, the HDMI logo and High Definition Multimedia Interface LLC in the United States and other countries. Apple TV is a trademark of Apple, Inc. Xbox is a trademark of. Microsoft Corporation. TiVo is a trademark of Tivo, Inc. or its Apple is not responsible for the operation of this device or its All other marks are registered English System features. Using the front console inputs. Front USB input. Front HDMI input. If you need help. Changing the image view..... Turning on your TV..... Optional radio tuner settings..... Watching TV. Using a set top box. Using the tuner in your TV. Tuning to a TV station. MORE buttons. Activating a MORE button function. Button function definitions..... Playing an iPod or iPhone V25 and V35 only.. Resetting the system. Pairing the remote with the console. Performing a system software update..... English If you need help. By now you should have successfully set up your If you have questions while operating your new This guide describes your new remote control and If you experience any operating difficulties, be sure to System features Registering your product enables you to receive It also allows us to

sendPlease follow the instructions on your Product. Registration Card to register. Failure to register willEnglishPlayback controls. Shuffle. Stop.

Record.<http://elitedentalallasvegas.com/userfiles/compost-tea-manual.xml>

Pause. Play. Note See “Operating Your Connected Devices” onThe display provides operating and system statusExamples. Remote glow button. Pressing the glow button on the rear of the remoteV25 and V35 systems. The light turns off automaticallyGlow button. Cable. To adjust the illumination level. CableAlbum. Hold number keyNote To avoid the risk of deleting aOK buttons at the same timeContrast.EnglishAccepts stereo headphones with a 3.5 mm stereo plug. Volume level is set by the volume controls. Control buttonsTurns system power on or offIncreases system volume. Setup. Displays the Setup menu press and releaseRight R audio channel red. Used for viewing photo files from a USB deviceAlso used for updatingLeft L or mono audio channel white. Composite video yellow. Used for temporarily connecting an HDMI device suchStarting your system. Press the power button on the remote or on theTo keep energy consumption to a minimum, the systemWhen it changes from blinking to solid green, yourPressing the remote SOURCE button alsoSetup. Pressing the Setup button on the consoleTurning on your TV. If you programmed your remote during the initialOtherwise, use theShutting down your system. Press the power button on the remote or onHowever, ifEnglishThe SOURCE menu allows you to select yourThe currentlyHighlightedYour TV may be receiving its program content through aTo return to using other sources, use the TV InputNote Since most TVs come with an IR infrared remote,Using a set top box. If you connected a cable, satellite, or other set top boxTuning to a TV station. You can tune to a TV station using any of the followingEnter the channel number on the keypadPress Channel Up or. Down to change channels.Press. Press GUIDE. Use the navigation, pageIf you are using the tuner in your TV to receive TVEnglishPause. During the interactive setup process you may have. These would typically beStop. Fast forward or search forward. If you programmed the Bose remote for the device,Up one item.

Fast rewind or search reverse. Quick skip or skip forward. Quick replay or skip backward. Shuffle mode. Listening to a Bose link inputDown one item. Move left. Move right. Select. Next page, channel, or disc. Previous page, channel, or disc. You can use your LIFESTYLE system to listen toConnect that system toTo listen to the Bose link source, press the SOURCEBe sure to connect your Bose link device beforeIt will not appear in the. SOURCE list until it is connected.Your LIFESTYLE system can play audio and videoThe following controls are available to operate yourUp one page. Be sure to dock your iPod before attempting toDown one page. Your iPod menus and content appear on the left sideThe “Now Playing” track appears on the right. Down one menu itemUp one menu itemUp one menu level If playing video,Down one menu level. Down one menu level. Next track or audio bookmark. Previous track or audio bookmark. Fast forward. Fast rewindEnglishUse the following controls for viewing digital photos. Up one menu item press and hold toThese inputs appear inThese inputsFront USB input. Down one menu item press and holdUp one folder level, or exit and returnUp one folder level, or exit and returnDown one folder level. Down one folder level if a folder isPlay slideshow if a photo file isWhen selecting the USB source, folders appear at theSelecting a folder displays its contents. Up nine items. Down nine itemsPlay slideshow of highlighted folder. Pause slideshow. Exit slideshow and return toNext image. Previous imageThe Bose remoteYou need to use the controls on the device itself orStretch 1. Stretches video image evenlyStretch 2. Stretches the edges of theZoom. Enlarges the video image pressGray Bars. Places vertical gray bars on theFit. Fits the video image to yourFront HDMI input. You can use this input for devices that have an HDMIYou need to use the controlsChanging the image view.

Press the image view button to display a menuContinue to pressYour TV picture will change momentarily after youLeaves original video imageAutoWide. Fills width of the screen withoutEnglishRecalling a preset stationTo recall your stored presetsAM in the SOURCE list. Tuning

to a station
Deleting a preset station
Storing a preset station. The builtin radio tuner can store up to 25 FM and 25. AM preset stations.
Optional radio tuner settings
For 1025, press and hold the OK button to store
On, Off
Press the MORE button to display additional
The functions that appear
The following
Button function definitions. Displays a list of favorite channels. Performs A, B, C, or D functions in an
Enables or disables Teletext functions. Activating a MORE button function
Performs Red, Green, Yellow, or Blue
Displays program guide for previous or
Displays playlist of recorded programs. Activates picture
inpicture mode. Accesses video on demand. Switches your TV to live programming. Switches between DVD and VCR in a
English
Repeat track on an iPod or other digital
OPTIONS menu for the current source. The following is an example for a video device.
Switches tuners in a multituner device. Accesses the system menu for your
Accesses interactive features for some
Highlighted option. See the following on "Changing system
Selected setting.
Changing system options. The number of items appearing in the OPTIONS menu
Option. Available
Settings. Sound. Original. Plays stereo audio when stereo audio is received from the source. Alternative. Plays 5channel audio when either stereo or 5channel audio is received from the source. Enhanced Mono. Plays simulated surround sound when monaural audio is received from the source. Current Station. Stereo Off. Changes the current station to mono, which can help when tuning to a weak radio station
Game Mode. On. Produces improved video performance for game systems. Audio. Compression. Enhance Dialog. Enhances sound output so you can hear movie dialogs more distinctly. Smart Volume.

Reduces the range of volume levels in a movie soundtrack so the difference between
Audio Track.
Track 2. Selects track 2 from an external audio stream with multiple audio tracks. Both Tracks. Selects tracks 1 and 2 from an external audio stream. Not Available. Automatically selected when only one track is received. Volume Offset. Source. Overscan. On. Applies video overscan to the current video source. System Bass. Adjusts bass level
English
Available Settings. System Treble. Adjusts treble level. Adjusts the audio delay to synchronize audio with the video. Rear Speakers. This option is unavailable if the Speakers option is set to Stereo 2 or Front 3. Center Speaker
Speakers. Stereo 2. Activates only front left and right speakers. Front 3. Activates only front left, center, and right speakers. Volume on TV. Off. Prevents the display of the volume level meter and mute indicator. TV Speakers. On.
Sends HDMI audio to your TV audio from the TV is not affected by plugging headphones into
Video Output
After performing the initial system setup using the
Setup menu. To display the Setup menu on your TV, press the Setup
Menu item. Restart initial Start the interactive setup process from the
ADAPTiQ. TV options
Source setup
Add a device
Add another device or accessory to your
Homewide
Alternative 64 house codes, 4 room codes. Update. Perform a system software update see
Teach mode
Send IR codes to program a learning remote. Exit. Returns you to the last source selected. What you can do. Resume initial Return to the interactive setup process at the
Language. Menu item. Change the language of the onscreen
Start the ADAPTiQ audio calibration process
English
Your LIFESTYLE system can deliver Bose quality
Connecting a Bose link
compatible product to the. Bose link OUT connector on the control console
For more information or to purchase additional
Expansion guidelines. To set up a Bose link
compatible system in another
Your system is set to house code 15 at the factory.

To see the house code, select Homewide in the. Setup menu and then select house code. On the
Your system has two house code modes. The. Standard mode provides 16 house codes and
Note Switching between Standard and Alternative
However, if both rooms want to listen to the radio
Cleaning. Replace all four batteries when you notice a marked
You can wipe the outside surfaces using a soft dry
Low battery icon
CablePod
Viewing system information. The Beatles
AA IECLR6 batteries 4. Battery compartment cover
IR database
Press the Setup button again to remove the list from
English
Problem. What to do
It should blink with each press. If not, see "Pairing the remote with the console" on page 24 and follow the procedure. The Bose remote does not
Press the Setup button on the control console. Select the device options
See "Performing a system software update" on page

24. One video connection is lessSystem doesn't doNo sound. Make sure the AC power cord is inserted securely into the power supply. Select a connected device from the SOURCE menu. Reset the system. See "Resetting the system" on page 24. Make sure the Acoustimass module is plugged into a live AC mains outlet. Increase the volume. Press the Mute button and make sure your system is not muted. Check the input connections on the control console. Make sure that you have selected the right source. Make sure that the audio input cable is firmly plugged into the Acoustimass connector on the controlWhat to do. Sound is marred by a loudNo sound from centerCenter speaker is too loudRear speakers are too loudRadio does not workFM sound is distortedAdjust antenna position to improve reception. Make sure the AM antenna is in an upright position. Move antennas farther from control console, TV, or other electronic equipment. Select another station. You may be in an area of weak signal coverage for some stations.EnglishWhat to do. FM sound is noisy when. Speakers option is set to. Front3 or Surround5Set Speakers option to Stereo2 in the.

OPTIONS menu to minimize noise. Sound is distorted. No sound from a connectedNo TV picture, but audio isMake sure it is correct for the video source. For guidance, press the SetupSelect the device options and follow the onscreen instructions.Intermittent audio dropoutsPerforming a system software updateSystem software updates are available periodically andThe power light on the control console changes toThe power lightUpdate.Pairing the remote with the consoleIf not, press theThe power lightContacting customer service. Customer Service. See the address sheet included inEnglishYour LIFESTYLE system is covered by a limited warranty. DetailsPlease refer to the card forFailure to register will not affectWhat you must do to obtain Limited Warranty Service. Return product, with proof of purchase from an authorized BoseCartons not bearing a returnTechnical information. Remote control. Frequency 2.4 GHz. Range 33 ft 10 m. Control console power supply rating. AC input 100240V. DC output 12VInternational 220240V. Licensing information. This product contains one or more free or open source softwareTo read this file,To receive a copy of the source code for the open sourceCorporation, The Mountain, Framingham, MA 017019168. Bose. Corporation will distribute such source code to you on a disc forAll of the aboveThis offer is valid for a period ofBose Corporation.AM324446 Rev.00PDF Version 1.7. Linearized No. XMP Toolkit Adobe XMP Core 4.0c316 44.253921, Sun Oct 01 2006 171439. Modify Date 20091216 0959140500. Create Date 20091207 1004450500. Metadata Date 20091216 0959140500. Creator Tool FrameMaker 8.0. Creator JH16695. Document ID uuid523da0c1c1d1446cb688ee1e53dc7b61. Instance ID uuidd6bff365ce854dcb93baac5edb667ab9. Producer Acrobat Distiller 8.1.0 Windows. Has XFA No. Page Count 32. Author JH16695. Please try again.In order to navigate out of this carousel, please use your heading shortcut key to navigate to the next or previous heading.

In order to navigate out of this carousel, please use your heading shortcut key to navigate to the next or previous heading. In order to navigate out of this carousel, please use your heading shortcut key to navigate to the next or previous heading. Register a free business account Exclusive access to cleaning, safety, and health supplies. Create a free business account to purchase Please try your search again later.You can edit your question or post anyway.Page 1 of 1 Start over Page 1 of 1 In order to navigate out of this carousel, please use your heading shortcut key to navigate to the next or previous heading. Amazon calculates a product's star ratings using a machine learned model instead of a raw data average. The machine learned model takes into account factors including the age of a review, helpfulness votes by customers and whether the reviews are from verified purchases. Please try again later. Marcia MacKinnon 1.0 out of 5 stars Sorry, we failed to record your vote. Please try again It is a pity since the Wave itself it last forever.Unfortunately that system has no any other way of operating the system directly other than by the remote. This is a copycat remote of the system.Do not recommend to buy it.Sorry, we failed to record your vote. Please try again Also, there was no battery included.Sorry, we failed to record your vote. Please try again Sorry, we failed to record your vote. Please try again Not sure why I was asked to review it! Thanx!Sorry, we failed to record your vote. Please try again I have not yet discovered its

secret. Sorry, we failed to record your vote. Please try again I was worried I would have to buy a OEM remote for my BOSE but this works wonderful with it. Sorry, we failed to record your vote. Please try again I should have saved. I should have saved the receipt and wrappings. It worked when I first tried it then the next day it didnt turn the wave radio or CD player on, Sorry, we failed to record your vote.

Please try again Great replacement remote. Sorry, we failed to record your vote. Please try again Absolutely identical to the original. Absolutely identical to the original. Sorry, we failed to record your vote. Please try again. [Click here](#) for more information on the types of cookies we use and how to change your cookie settings. Refer to the owners manual for your remote control to find programming instructions and codes. The Bose systems remote control is a universal remote that can be used to control many devices. For more information, see Programming your remote. Please feel free to share additional comments below. [Click here](#) for more information on the types of cookies we use and how to change your cookie settings. Just type your request below Quick tip Try searching for just one or two words e.g., connection help. Please choose a different delivery location. Our payment security system encrypts your information during transmission. We don't share your credit card details with thirdparty sellers, and we don't sell your information to others. Used Like New Ships Fast! Thanks Please try again. Please try again. In order to navigate out of this carousel please use your heading shortcut key to navigate to the next or previous heading. Page 1 of 1 Start over Page 1 of 1 In order to navigate out of this carousel please use your heading shortcut key to navigate to the next or previous heading. In order to navigate out of this carousel please use your heading shortcut key to navigate to the next or previous heading. Register a free business account Please try your search again later. Slender remote controls the Wave music system III and many functions of connected Wave accessories. Amazon calculates a product's star ratings based on a machine learned model instead of a raw data average. The model takes into account factors including the age of a rating, whether the ratings are from verified purchasers, and factors that establish reviewer trustworthiness.

Please try again later. Bernie T. 5.0 out of 5 stars It was a bit of a risk, because I read an Amazon review that said it didnt work on older models. Well they were wrong. I am very pleased with it. So glad I could quickly reorder this necessary item. I got it out of the package and was able to turn on my radio. Advertisements not abundantly clear about which remote goes with which Bose music system. Confusing. Just for the record, despite glossing over in various advertisements, each Bose system may have a different model of remote control. Make doubly sure you are ordering the correct remote for your model. Somehow managed to misplace mine, and while I know it will turn up eventually, this one functioned perfectly right out of the package. Couldnt be happier, and the delivery was very quick. High Quality always from Bose! So when your regular remote ends up hiding behind the TV stand and you cant find it for months, you need this baby. It came with a battery and works very well indeed. Highly recommended item and seller. Sorry, we failed to record your vote. Much better! But then I encountered a new problem. When the TV audio is external, the TV remote can't control it. Luckily the radio has a remote otherwise I'd have to walk across the room to mute the TV when the phone rings, but I'd rather have the TV volume on the same remote as the rest of the TV controls. The cable remote instructions list these codes for Bose audio equipment 070, 170, 224, 374, 409, 460, 532. I tried them all, but none of them worked. So then I tried the scanning method, holding down the channel button until the radio turns off. But it never turned off. So I called Bose customer support. Their products may be pricey, but they sure have good customer support. I got someone on the phone immediately, and he was knowledgeable. He explained the problem instantly and gave me the solution. But this is only true in their highend home theatre equipment.

You can't find the right code because there is no code. To control a Bose device, you need a universal remote with "learning" capability. It has to be one of those remotes where you put the

original remote nosetonose with the universal and “teach” the universal by pressing the corresponding buttons. I spent some time looking at the extremely complex manual for the Harmony and decided no way. I found another remote that is nearly a tenth the price and, in my opinion, far better Universal Remote Control URCWR7. Even better, I have it set up so the volume controls for my TV and Bluray both use the Bose device. You can’t do that with any other universal remote. It’s a feature they call “punch through”, and it’s fantastic. You can make functions from any device available from any component. A reviewer for the Sony Universal Remote complained that it switched to the TV component whenever you pressed the volume control, so beware of that one! You need to program both into the universal remote. I set it up so when I turn the TV on or off, the Bose Wave Radio turns on or off, too. The new Bose code was listed in the booklet for the new remote. If I use the AUX button, it works; if I use the AUD button where I want to put it, it does not work. I’ve found this problem with other devices, as well. For example, the code for my DVD burner works on the DVD button, but not on the CD button. This is irksome because I want to put my Bluray player on the DVD button and the DVD burner on the CD button. This thing where not all codes work with all buttons is an annoying limitation in the WR7. In order to post comments, please make sure JavaScript and Cookies are enabled, and reload the page. [Click here for instructions on how to enable JavaScript in your browser.](#)